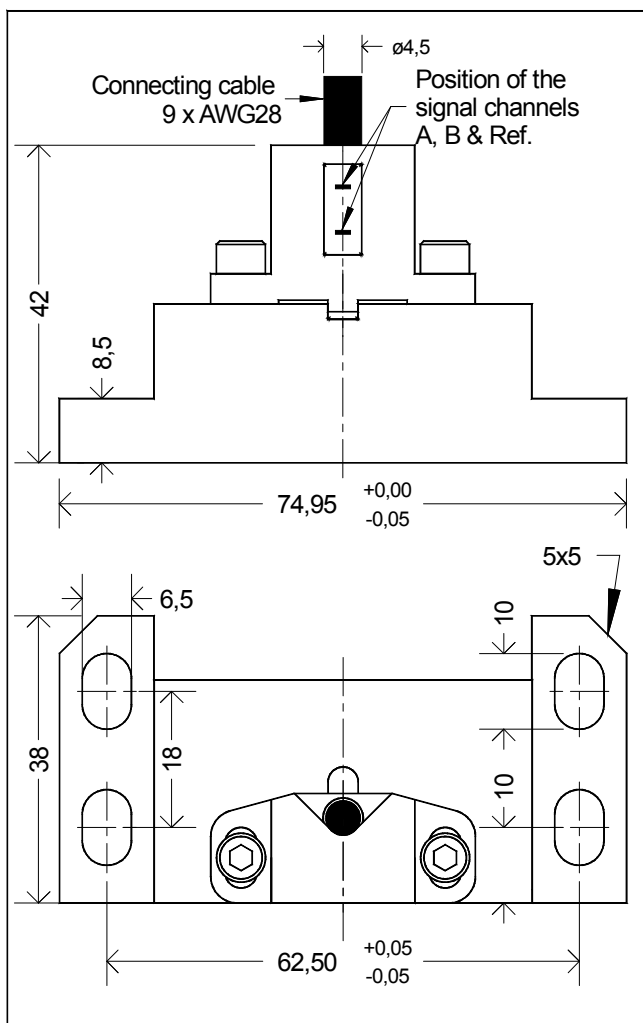


# Magnetic gear wheel encoder RGM2S-A with analog output signals



## Contactless incremental encoder for measuring rotary motion

- Construction, function and signal quality similar to that of magnetic rotary encoders RGM2G-A
- Suitable for all gear wheels on the market with module  $M = 0.3$  or  $0.5$
- High ESD interference resistance up to **30kV**
- I2C interface for the fine-tuning of signal parameters if required
- Type **RGM2S-A-M3S/...** or **RGM2S-A-M5S/...** compatible with **SIZAG** sensor (Siemens)
- With plug (e.g. 17-pin flange socket, straight or angular) upon request

## Output signals

- SIN- and COS signals with 1Vpp
- Reference signal
- Remote Sense RS\_UB
- Supply voltage UB = 5V
- Reverse voltage protection
- Short-circuit proof

## Cable assignment (Type T)

A shielded cable with 9 wires, AWG28, is attached at the sensor output. The outer sheath is green according to RAL6018, based on DESINA specifications.

The cable is assigned as follows:

- |                |        |
|----------------|--------|
| ■ Signal A +   | white  |
| ■ Signal A -   | brown  |
| ■ Signal B +   | pink   |
| ■ Signal B -   | black  |
| ■ Signal Ref + | grey   |
| ■ Signal Ref - | yellow |
| ■ UB = 5VDC    | red    |
| ■ GND (0V)     | blue   |
| ■ RS_5V        | green  |

The **shield** is connected to the casing on the encoder side.

## RGM2S-A-...3

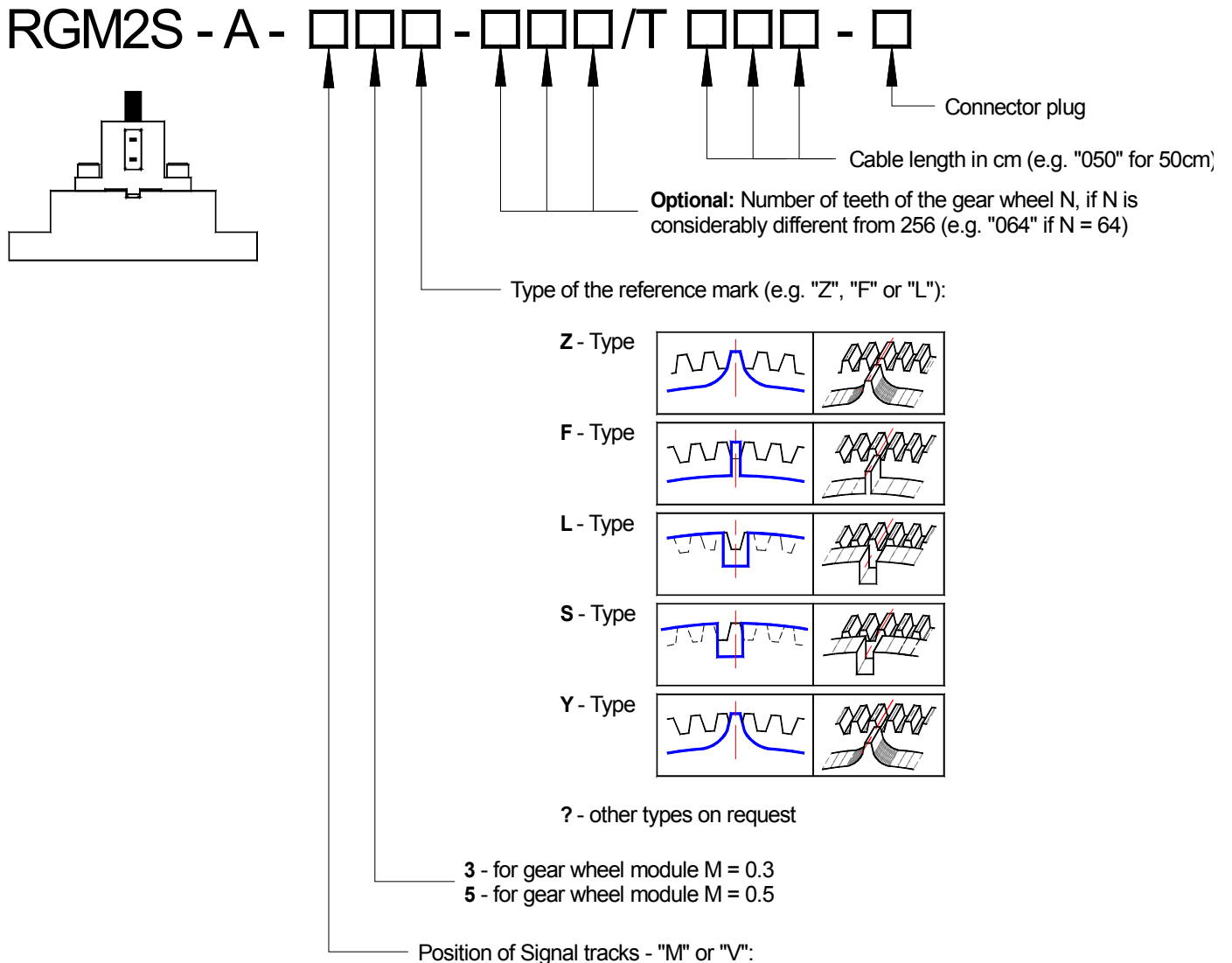
... for gear wheel module  $M = 0.3$

## RGM2S-A-...5

... for gear wheel module  $M = 0.5$

# Magnetic gear wheel encoder RGM2S-A

## Order identifiers



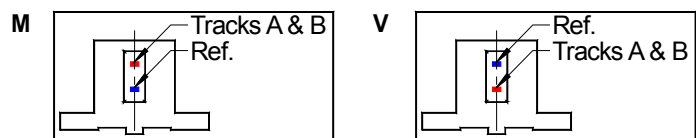
### Accessories

Measuring gear wheels: **ZR3-256/Di** or **ZR5-256/Di**  
Other types of gear wheels on request.

**External interpolation box** for the digitalisation and interpolation of the analogue encoder signals

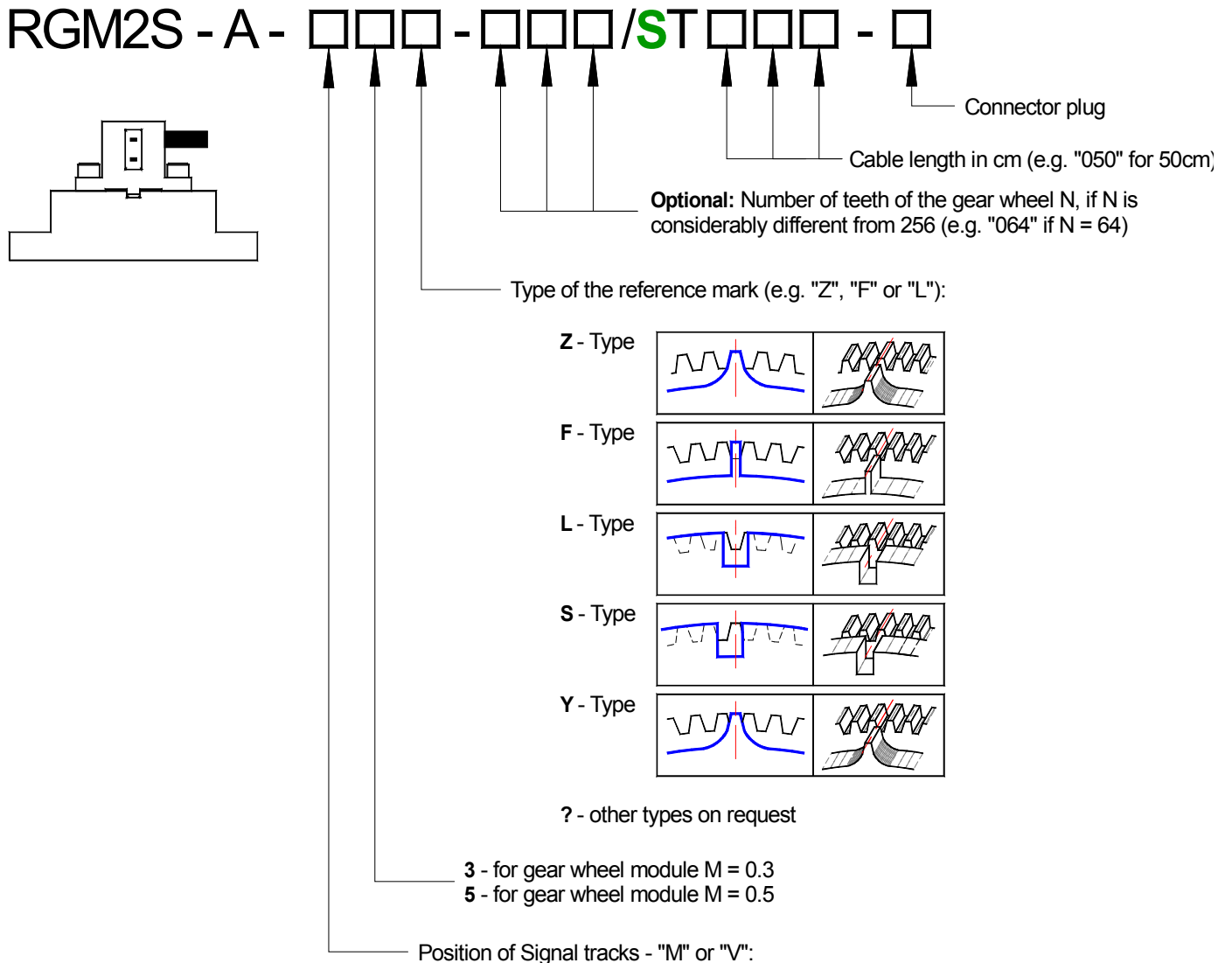
**PB-RGMA-USB** box with **SPB-RGMA-USB** software for the fine alignment of encoder signals via the I2C-interface

Digital calibration and measurement unit **DCMU** for the visualisation, detailed analysis and fine alignment of the encoder signals.



# Magnetic gear wheel encoder RGM2S-A

## Order identifiers



### Accessories

Measuring gear wheels: **ZR3-256/Di** or **ZR5-256/Di**  
Other types of gear wheels on request.

**External interpolation box** for the digitalisation and interpolation of the analogue encoder signals

**PB-RGMA-USB** box with **SPB-RGMA-USB** software for the fine alignment of encoder signals via the I2C-interface

Digital calibration and measurement unit **DCMU** for the visualisation, detailed analysis and fine alignment of the encoder signals.

